

SPM Active

Specialized Pro-Resolving Mediators



Specialized Pro-Resolving Mediators

In the past, it was thought the resolution of the immune response was a passive process.¹ However, recent groundbreaking research has identified a structured and orderly system which actively resolves the immune response. During the resolution phase, specialized pro-resolving mediators (SPMs) are produced at the affected tissue site and function as “resolution agonists,” orchestrating the resolution-related activities and helping to facilitate this response toward homeostasis.*¹⁻³

Lifestyle and nutrition influence SPM status

SPM production relies on nutrition, lifestyle behaviors, and health status. Individual levels of SPMs can differ and can vary due to:^{4,5}

- Aging process
- Dietary patterns
- Physical fitness
- Other stressors

Why Metagenics SPM Active?

- SPM Active is targeted to help support the body’s natural ability to resolve the immune response and physical stress.*
- Metagenics set the standard for defining SPMs based on activity for use in nutraceutical formulas in collaboration with world-renowned SPM experts.
- Our revolutionary and exclusive formula was developed through advanced fractionation technology featuring standardized levels of 17-HDHA and 18-HEPE found in marine lipids.
- Supplementing with SPMs may help facilitate the body’s natural resolution process and completion of its response to physical challenges.*

Form: 60 Softgels, 120 Softgels

Serving size: 2 Softgels

Calories	10
Calories from Fat	10
Total Fat	1 g
Cholesterol	<5 mg
Active Fractionated Marine Lipid Concentrate [†] SPM content standardized to 18-hydroxy-eicosapentaenoic acid (18-HEPE) and 17-hydroxy-docosahexaenoic acid (17-HDHA)	1 g

Ingredients: Fractionated marine lipid concentrate [fish oil (anchovy, sardine, and mackerel) and mixed tocopherols (antioxidant)], softgel shell (gelatin, glycerin, and water), and silica. **Contains: Fish (anchovy, sardine, and mackerel).**

Directions: Take two softgels once daily or as directed by your healthcare practitioner.

This product is non-GMO and gluten free.

Caution: If pregnant, nursing, or taking nutritional supplements or medications, consult your healthcare practitioner before use. Keep out of the reach of children.

Storage: Keep tightly closed in a cool, dry place.

Do not use if safety seal is missing or broken.

*These statements have not been evaluated by the Food and Drug Administration. This product is not intended to diagnose, treat, cure, or prevent any disease.

Understanding the immune response

When the body experiences physical stress, the immune system is activated. The body's natural immune response is a healthy process that has an initiation phase and a resolution phase.^{1,3} A resolved immune response represents a balance in the initiation phase and the resolution phase (Figure 1). Supplementing with SPMs may help facilitate the body's natural resolution process and completion of its response to physical challenges.*

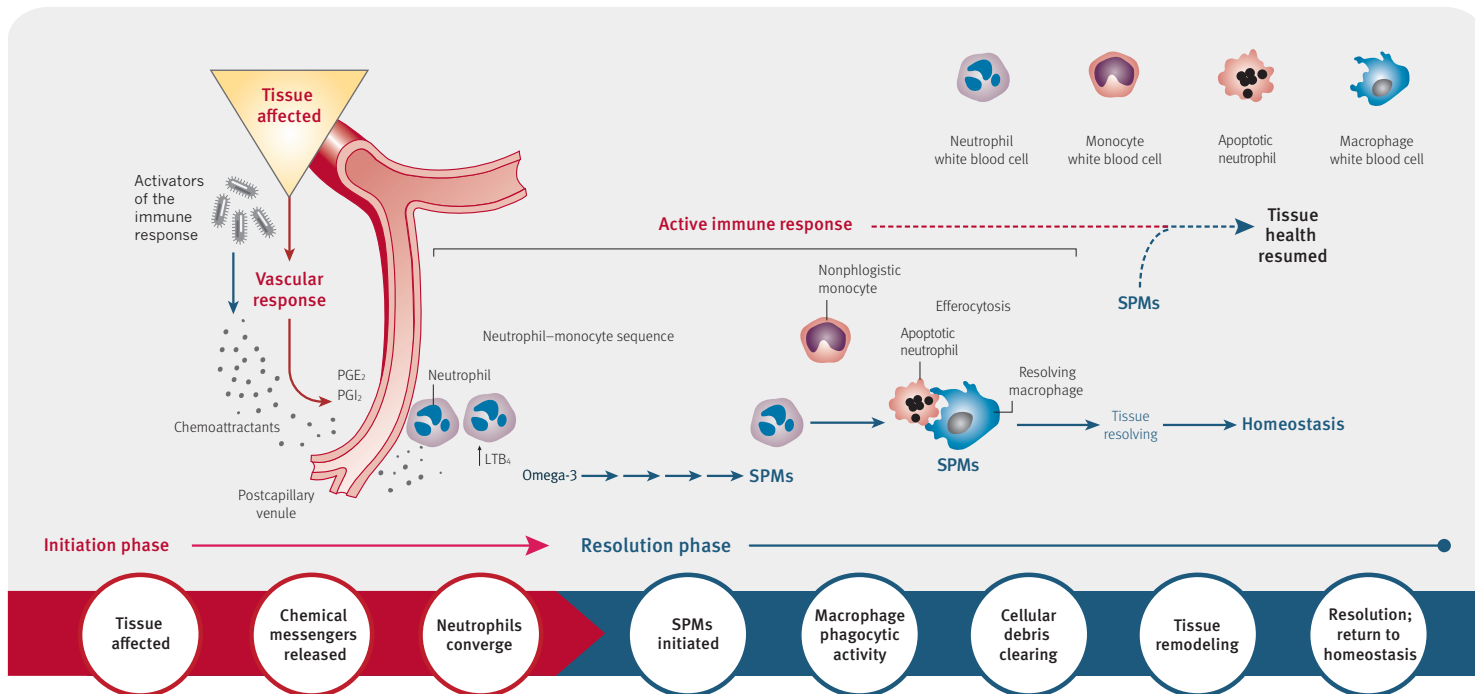


Figure 1. Adapted from: 1. Serhan CN. *Nature*. 2014;510(7503):92-101. 2. Serhan CN, et al. *Semin Immunol*. 2015;27:200-215. 3. Lopez-Vicario C, et al. *Eur J Pharmacol*. 2016;785:133-43 15 [Epub ahead of print]

References:

1. Serhan CN. *Nature*. 2014;510(7503):92-101.
2. Spite M, Claria J, Serhan CN. *Cell Metab*. 2014;19(1):21-36.
3. Recchiuti A. *J Gerontol Geriatr Res*. 2014;3:151.
4. Serhan CN, Brain SD, Buckley CD, et al. *FASEB J*. 2007;21:325-332.
5. Nathan C, Ding A. *Cell*. 2010;140:871-882.

Complementary Products

- **Inflavonoid Intensive Care®:** Highly bioavailable curcumin and xanthohumol with boswellia and ginger
- **OmegaGenics® EPA-DHA 1000:** Helps support cardiovascular, musculoskeletal, and immune system health*
- **Kaprex® AI:** Selective kinase response modulators for healthy immune function*

* These statements have not been evaluated by the Food and Drug Administration. This product is not intended to diagnose, treat, cure, or prevent any disease.

👉 Talk to your healthcare practitioner today about **SPM Active** or visit SPMActive.com.

